

HANG- EN SLUITWERK

4 - Overige sluitingen



Reken op ons.

Auerhaan Lelystad is een bedrijf met een zeer lange historie; opgericht in 1885, is het bedrijf een bekende en betrouwbare toeleverancier van producten voor de carrosseriebouw, busbouw, machinebouw, scheepsbouw en jachtbouw. Vele vertegenwoordigingen van gerenommeerde fabrikanten in Europa en daarbuiten maken het productassortiment van Auerhaan tot een zeer breed programma. Het mag u dan ook duidelijk zijn dat de informatie die wij u geven via deze website nooit compleet kan zijn.



Hang- en Sluitwerk

Auerhaan levert kant-en-klare oplossingen voor slot- of vergrendelingssystemen en toegangscontrole voor nieuwbouw en aftermarket. Door een jarenlange samenwerking met toonaangevende fabrikanten zoals Weston Body Hardware (WBH) zijn betrouwbare en kwalitatief hoogwaardige producten ontwikkeld die onder andere worden toegepast in onderstaande bedrijfstakken:

Industriële toepassingen:

- Energie-, meet- en regeltechniek
- Generatoren
- Machinebouw
- Omkastingen

Voertuigbouw, carrosseriebouw en transport:

- Autoaanpassingen
- Bedrijfsvoertuigen
- Camper- en caravanbouw
- Militaire voertuigen en offroad voertuigen
- Railmateriaal
- Speciaalbouw

Gebouwenteknik:

- Klimaattechniek
- HVAC&R
- Toegangssystemen

Scheepsbouw en offshore:

- Commerciële vaartuigen
- Jachtbouw
- Marineschepen

Auerhaan is daarnaast ook uw partner in bovengenoemde sectoren op het gebied van comfort, hygiëne en interieur. U kunt hierbij denken aan producten als kookplaten en spoelbakken voor schepen en voertuigen alsook koel- en vrieskasten. Isolatiemateriaal ten behoeve van geluid, geluidsabsorptie, ontdreuning en isolatie van warmte of koude. Een breed programma LED verlichting. rubber- en kantprofielen, verwarming en ventilatie in 12 en 24 volt, vastzetsystemen en veiligheidsgordels.

1 - Kleine inbouwsloten

Het gamma “kleine inbouwsloten” omvat sluitingen voor kleinere deuren, luiken en kleppen van industriële kasten, gereedschapskisten of machines voor toepassingen binnen en buiten. Verschillende inbouwdiepten zijn leverbaar, bediening is mogelijk door middel van een normale sleutel of in sommige uitvoeringen door middel van speciaal gereedschap.

2 - Deurkrukken

Het assortiment “deurkrukken” bestaat uit opbouw-deurgrepen in afsluitbare en niet-afsluitbare modellen. De portierkrukken of T-krukken zijn ook verkrijgbaar als half-inbouw of met een inbouwschaal. Voor extra sterke toepassingen zijn onze “Heavy-Duty”modellen in modern design een goede keuze. De krukken zijn verchroomd of voorzien van een zwarte poedercoating.

3 - Inbouwsloten

Onze “inbouwsloten” kennen vele toepassingen, als deurslot in een omkasting van aggregaat of machine, in kisten voor de carrosseriebouw of serviceluiken van zwaar materieel, schepen en HVAC-opstellingen. Verkrijgbaar als klap- of T-greep uitgevoerd met grendel, vastzethaak, espagnolet of 3-weg sluitpunten. Uitgevoerd in RVS of sterke kunststof “driMET” (IP65 beschermd) in een aantrekkelijke vormgeving.

4 - Overigesluitingen

Auerhaan heeft bandenbaksloten, trekgrendels en eindknippen in staal, kunststof of RVS in diverse afmetingen. Verende deursloten met of zonder binnen-bediening en kabel- of stangbediende “anti-diefstal” sluitsystemen voor voertuigen en machines. Met de daarbij behorende deurvangers, schootplaten, slotpenen of -haken. Slotbedekkers in chroom of kunststof zorgen voor een nette afwerking.

5 - Scharnieren

Scharnieren zijn er in vele uitvoeringen. Voor elke toepassing hebben wij een geschikte oplossing. Vaste of uitneembare modellen in staal, RVS of zware kwaliteit kunststof. Van (verzonken) schroeven tot “blinde montage” door middel van draadeinden; de mogelijkheden zijn veelzijdig. Rechte stalen scharnieren, aanlaspaumelles (met of zonder smeennippel) en blokscharnieren in verschillende afmetingen. Een solide afwerking om uw product toegankelijk te maken.

6 - Handgrepen

Om vast te houden, open te maken of op te tillen, wij leveren diverse handgrepen voor in- en opbouw van interieur, machines of kisten. Voor grote schuif- of roldeuren of juist voor kleinere meet- en regelkastjes. Leverbaar zijn “traditionele” verchromde handgrepen of sterke kunststof met een glad of gestructureerd oppervlak (in zwarte kleur). Ook voor opklapbare of inkortbare handgrepen kunt u bij ons terecht.

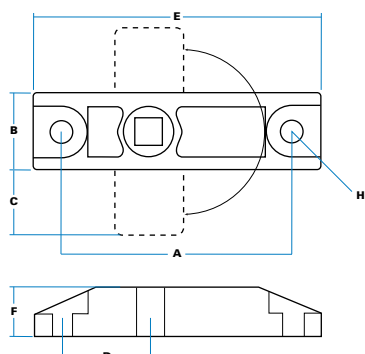
7 - Speciale producten

In dit hoofdstuk vindt u o.a. wegklapbare vasthouders, sjorogen of haken voor in- of opbouw om uw deur, luik, klep of lading stevig op zijn plaats te houden. Gefabriceerd van gegalvaniseerd staal, rubber, aluminium of RVS voor zware omstandigheden. Draaiplateau 's voor gemakkelijke toegang tot (bestuurders-) stoelen of machines en opklapbeugels voor stoelen of ook wel klapzitmonturen. Noodstoppen, brandstofdoppen en inspectiedeksels om uw machine of aggregaat te bedienen of onderhouden en robuuste opklapbare bekerhouders in diverse kleuren.



MOULDED 'BUDGET' LATCH

An ingenious design that replicates the function of our 'Universal' budget latch, but which takes full advantage of the properties of moulded materials. It is tough, lightweight, non-magnetic, self-lubricating, and totally corrosion-resistant.



9/01956 (set)
Budget latch & catch
plate, complete.

SPECIFICATION

A Hole Centres	66 mm
B Case Width	22 mm
C Bolt Projection	19 mm
D Location	33 mm
E Case Length	83 mm
F Thickness	14 mm
H Hole Size (diameter)	Ø 7 mm
J Shaft (when supplied)	10 mm

ORDERING CODE

9/01956 Moulded budget latch & striker



Simple 'deadbolt' latch, operated by 8mm square or by slot in top & bottom faces, against ramped striker.



Non-handed design, with bolt able to travel 180° through case but held positively in open and closed positions by concealed spring.



Bolts or rivets through fixing holes in recessed areas. Use large-headed fasteners (to 12mm dia.) for security.



Self-colour black with attractive textured finish.



Moulded throughout in acetal copolymer for maximum strength/wear resistance.



Progressive load tests were carried out by an independent proof house, and as a comparison on steel model (3/09656).

Moulded latches operated without distortion until loading of 0.63KN (70Kg). Steel latches became progressively distorted and failed at around 1.5KN (165Kg).

Note These latches are not recommended for applications involving impact loading.

MOULDED ESCUTCHEON COVER

Simple 'snap-shut' covers to protect external panel aperture. Waterproof, opens to 150° for easy fitting (no spring return).

9/01960

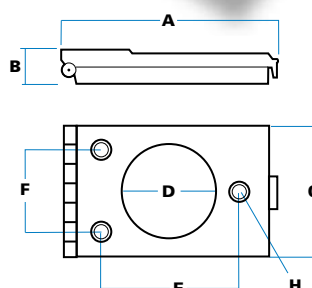


ORDERING CODE

9/01960 Moulded escutcheon cover

SPECIFICATION

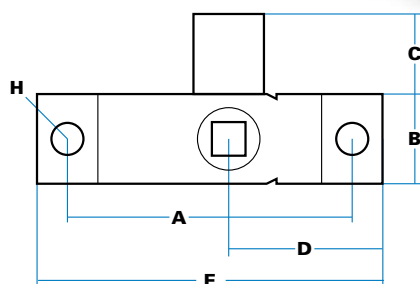
A Length	40 mm
B Height (Max.)	8 mm
C Width	30 mm
D Diameter	16 mm
E Hole Centres	20 mm
F Hole Centres	18 mm
H Hole Sizes, (diameter)	4 mm c/s 6 mm



'T' key 1/24596
(90mm)

'T' key
1/24597
(125mm)

3/09656 Budget latch
with steel bolt.



ORDERING CODE

1/24596	'T' Key 90 mm length
1/24597	'T' Key 125 mm length
3/09656	Universal budget latch - steel
3/09282	Universal budget latch - moulded bolt
3/09656SS	Universal budget latch - stainless steel

SPECIFICATION

A	Hole Centres	66 mm
B	Case Width	22 mm
C	Bolt Protection	18 mm
D	Location	38 mm
E	Case Length	85 mm
F	Thickness	10 mm
H	Hole Size Diameter	7 mm

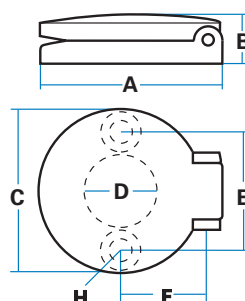
7/27900
2-hole cover

ORDERING CODE

7/27900	Escutcheon Cover, 2-hole, chrome
----------------	----------------------------------

SPECIFICATION

A	Length	32 mm
B	Height (max.)	8 mm
C	Width	28 mm
D	Diameter	13 mm
E	Hole Centres	20 mm
F	Hole Centres	15 mm
H	Hole Sizes, c/s 5mm	3 mm



'UNIVERSAL' BUDGET LATCH & FITTINGS

This simple 'deadbolt' latch has become an industry standard. Basic model is mild steel construction, with options in stainless steel or with moulded bolt. Two sizes of operating keys are available and diecast escutcheon covers can be fitted to conceal panel aperture.



Simple 'deadbolt' latch operated by 8mm square follow-bush.



Non-handed design, with bolt able to travel 180° through case, but held positively in open and closed positions by concealed spring.



Bolts or rivets through fixing holes through top & bottom plates.



Zinc plated throughout, with mild steel models.



Moulded nylon bolt (black) as option with mild steel model. All-stainless latch for corrosion resistance (food industry, etc.).

T-Keys are in malleable iron, burnished & lacquered, and suit all 8mm square follow-bushes.

DIECAST 2-HOLE ESCUTCHEON COVER

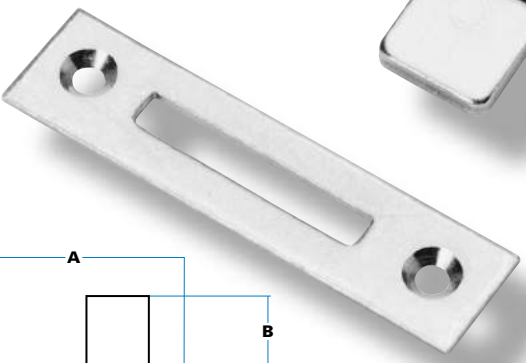
Simple 'snap-shut' covers to protect external panel aperture. Waterproof, with spring return, opens to 110° for easy fitting.



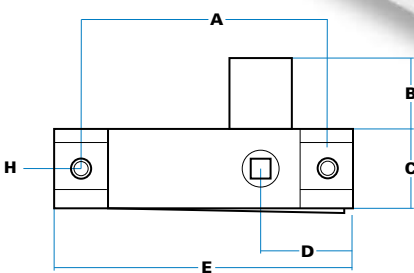
3/10510 (LH)



3/10511 (RH)



9/00749 striker plate
(60mm hole centres)



ORDERING CODE

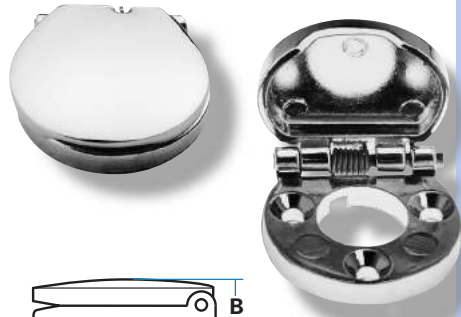
3/10510	Budget latch, LH
3/10511	Budget latch, RH
9/00749	Striker plate

SPECIFICATION

A	Hole Centres	66 mm
B	Bolt Height	18 mm
C	Case Width	22 mm
D	Location	28 mm
E	Case Length	83 mm
F	Thickness	10 mm
H	Hole Sizes, (diameter)	6 mm c/s 10 mm

- Simple 'deadbolt' latch operated by 8mm square follow-bush.
- Bolt travels 90° only, LH or RH as shown, and is positively held in both 'open' and 'shut' position by fitted spring.
- Bolts or rivets through fixing holes.
- Latches and striker plate are zinc-plated throughout.

9/00160
3-hole cover

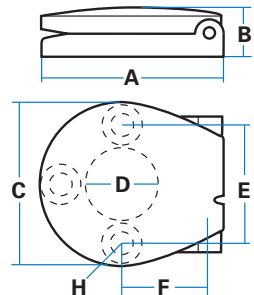


ORDERING CODE

9/00160	Diecast Escutcheon Cover
---------	--------------------------

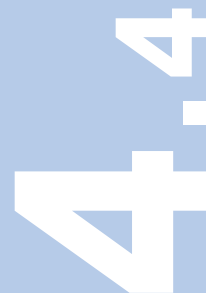
SPECIFICATION

A	Length	28 mm
B	Height (max.)	8 mm
C	Width	28 mm
D	Diameter	13 mm
E	Hole Centres	20 mm
F	Hole Centres	12 mm
H	Hole Sizes, (diameter)	3 mm c/s 5 mm



**DIECAST 3-HOLE
ESCUTCHEON
COVER**

Simple 'snap-shut' covers to protect external panel aperture. Waterproof, with spring return, opens to 110° for easy fitting.



9/00089

9/00088

ORDERING CODE

9/00088 Security budget latch

9/00089 Security key

9/00749 Striker plate

SECURITY BUDGET LATCHES

With same dimensions as the 'Universal' model, this design has a forged brass bolt to provide a blind, dust-proof centre which requires a special security key to operate. Latch is zinc plated.

ORDERING CODE

3/10843 'Bridge' latch, LH

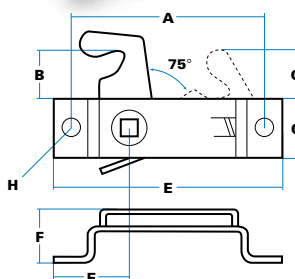
3/10844 'Bridge' latch, RH

SPECIFICATION

A Hole Centres	76mm
B Bolt Height	20mm
C Case Width	22mm
D Location	31mm
E Case Length	90mm
F Max. Height	21mm
G Bolt Min. Height	22mm
H Hole Sizes (Diameter)	Ø 5.5mm

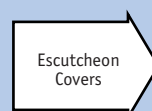


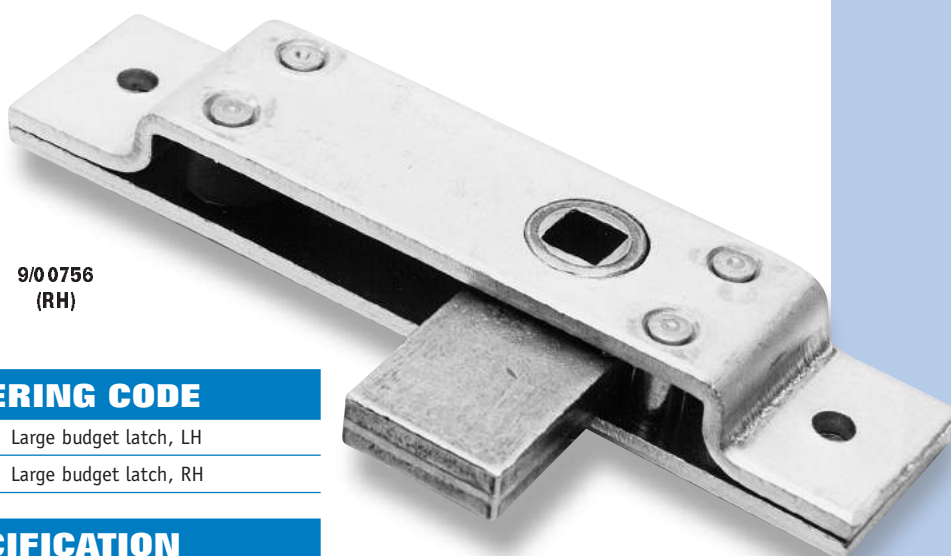
3/10844
(RH)



'BRIDGE' BUDGET LATCH

Mounted on a 'bridge' plate, this model gives extra clearance from the fixing surface. The hook gives a positive 'hold-down' against a stud or pin. Note that the hooked bolt does not completely withdraw into the case. Zinc plated, 'handed' as shown.





9/0 0756
(RH)

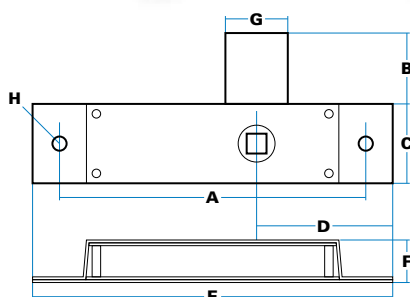
ORDERING CODE

9/0 0755 Large budget latch, LH

9/0 0756 Large budget latch, RH

SPECIFICATION

A Hole Centres	108 mm
B Bolt Height	25 mm
C Case Width	28 mm
D Location	48 mm
E Case Length	127 mm
F Case Depth	15 mm
G Location	22 mm
H Hole Sizes (Diameter)	Ø 5 mm



LARGE BUDGET LATCHES

With exceptionally strong construction, this model suits heavy applications and where a stronger, more substantial bolt is required to resist abuse. Uses include large storage containers, bus engine and luggage compartments.



Very substantially constructed with 3mm steel plates for full length of latch, four steel pillar rivets to prevent 'bowing' and distortion, and forged 8 mm brass bolt.



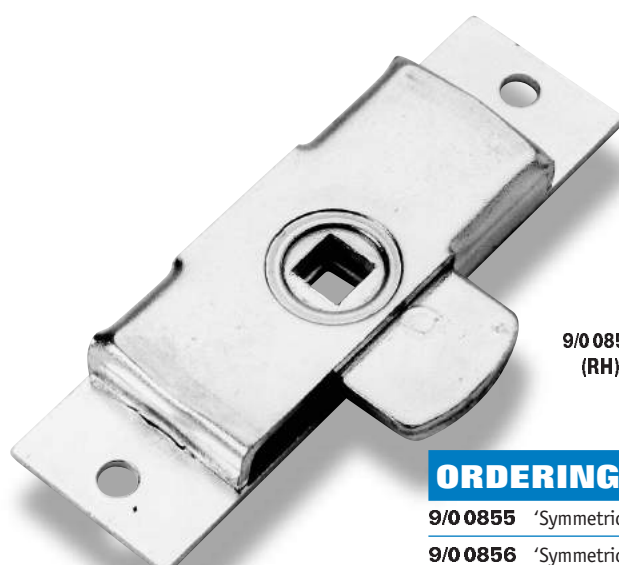
'Handed' for 90° operation, LH/RH as shown operated by standard 8mm square follow bush.



Fixing through 5mm holes. These can be enlarged or countersunk to special order.



Zinc-plated, with chemically-blackened spring.



9/0 0856
(RH)

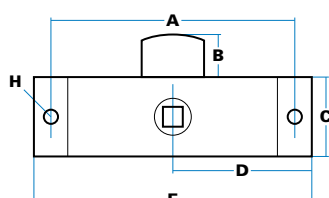
ORDERING CODE

9/0 0855 'Symmetrical' budget latch, LH

9/0 0856 'Symmetrical' budget latch, RH

SPECIFICATION

A Hole Centres	86 mm
B Bolt Height	15 mm
C Case Width	28 mm
D Location	51 mm
E Length	98 mm
H Hole Sizes (Diameter)	Ø 5 mm



'SYMMETRICAL' BUDGET LATCHES

All-steel latches, with bolt centred in case for symmetrical operation. Movement 90°, LH or RH, with bolt held positively by a concealed spring. Finish is clear zinc plated.



Fixing through 5mm holes. These can be enlarged or countersunk to special order.



Zinc-plated throughout.

3/16201 (RH)

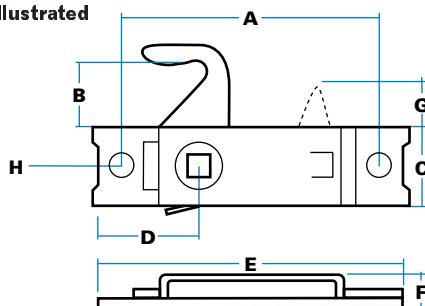


SPECIFICATION

A Hole Centres	93 mm
B Engagement	24 mm
C Case Width	25 mm
D Location	42 mm
E Case Length	112 mm
F Max. Height	8 mm
G Min. Projection	13 mm
H Hole Sizes	9 mm

Original application: as boot latches, LH on MG Midget, RH on TR4/5.

Right-hand illustrated



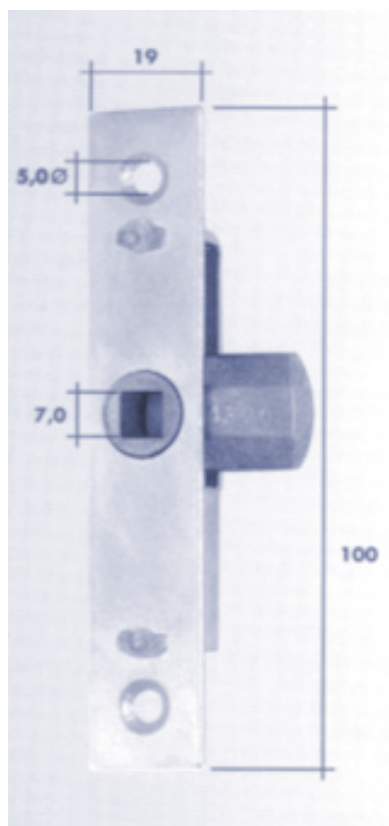
ORDERING CODE

3/16200 Hooked budget latch, LH

3/16201 Hooked budget latch, RH

040149

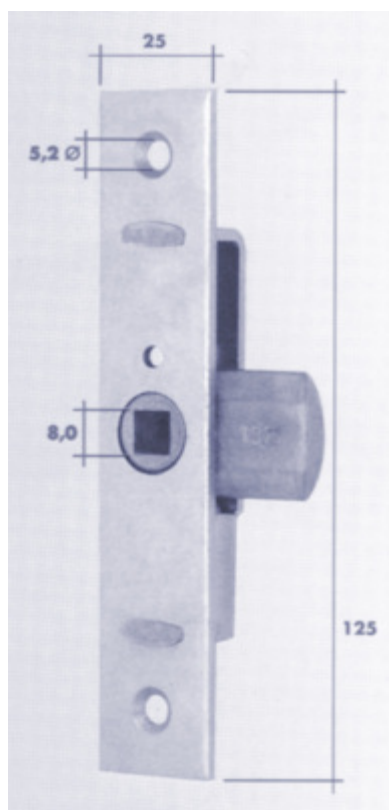
Zinc-plated, LH and RH
With 7 mm. T-key
Weight: 0,076 kg
Size: 19 x 100 mm



040152 / 040162 *

Zinc-plated
With 8 mm. T-key
Weight: 0,148 kg
Size: 25 x 125 mm

040152: 180° LH/RH
040162: 90° LH



4.6

HOOKED BUDGET LATCHES

These models have a shaped 'hooked' bolt which engages with a pin to hold two panels together laterally. The shape of the hook and string spring provide very positive engagement.



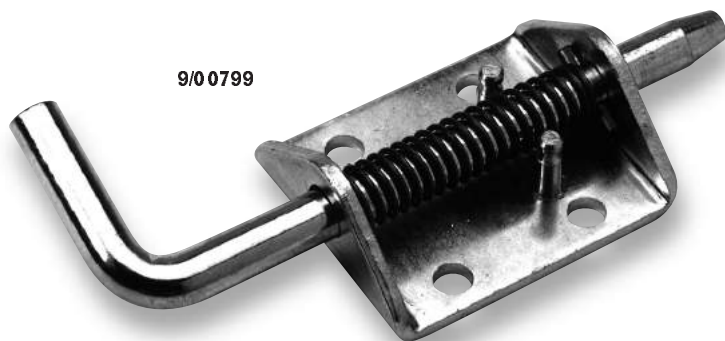
'Handed' for 90° operation, LH/RH as shown, with deadbolt held positively in both 'open' and 'shut' positions by fitted spring. Note that tip of bolt will project from case when bolt is withdrawn.



Plant-on fixing through 9mm holes. Note that top and bottom plates are mechanically interleaved for maximum strength.



Normal finish is zinc plated.



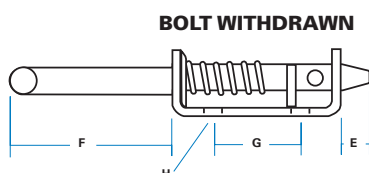
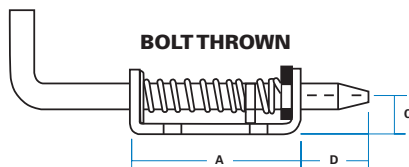
9/00799

ORDERING CODE

9/00799 Spring bolt

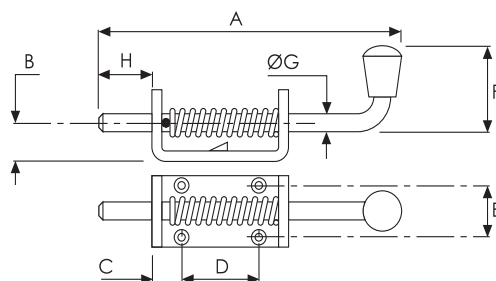
SPECIFICATION

A Case Length	60 mm
B Case Width	50 mm
C Height	15 mm
D Engagement	25 mm
E Projection	10 mm
F Projection	65 mm
G Hole Centres	30 mm
H Hole Sizes (Diameter)	7 mm



SPRING BOLT (LOCKABLE)

A simple, plate mounted spring bolt, using 10mm diameter steel rod with turned end for easy engagement. When withdrawn the bolt can be turned to lock behind two pillar rivets as shown. Bright zinc-plated finish.



Right:
0840/001

SPRING BOLT

Base retaining.

0840/001	Zinc plated	Weight 360g
-----------------	--------------------	--------------------

27 mm stroke - 4 x Ø6 c'sunk fixing holes

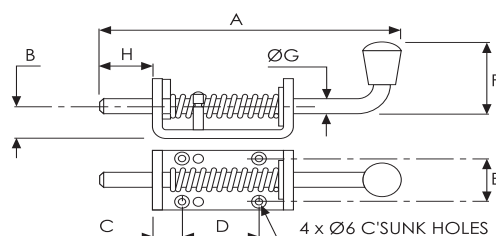
METRIC	(mm)	165	17	16	41	28	46.3	12.5	30
--------	------	-----	----	----	----	----	------	------	----

0839/100	316 Stainless Steel	Weight 126g
-----------------	----------------------------	--------------------

29 mm stroke - 4 x Ø5 thru fixing holes

METRIC	(mm)	124	11	14	30	21	47	10	40
--------	------	-----	----	----	----	----	----	----	----

A B C D E F G H



SPRING BOLT

Peg retaining.
27 mm. stroke

0837/001	Zinc plated	Weight 380g
-----------------	--------------------	--------------------

METRIC	(mm)	160	20	17.5	40	28	50	12	30
--------	------	-----	----	------	----	----	----	----	----

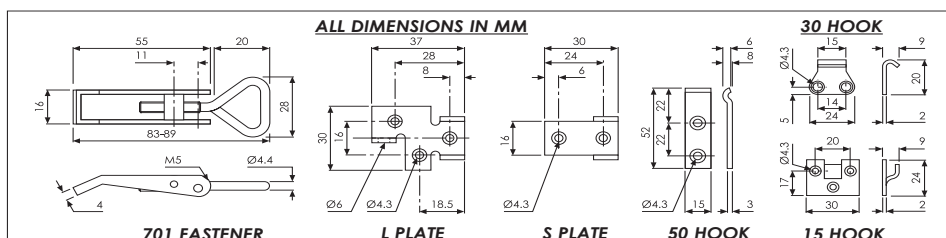
0837/020	304 Stainless Steel	Weight 380g
-----------------	----------------------------	--------------------

METRIC	(mm)	165	17	16	41	28	46	12.5	30
--------	------	-----	----	----	----	----	----	------	----

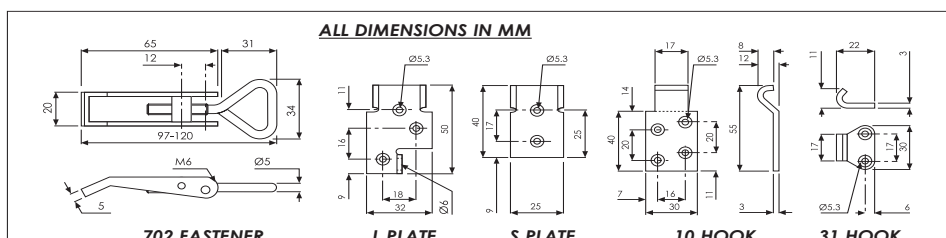
A B C D E F G H



701 SERIES OVERCENTRE FASTENERS	
9100/701SC	Zinc plated, non-locking
9100/701SCSS	316 Stainless steel, non-locking
Weight 40g	
9100/701LC	Zinc plated, locking
9100/701LCSS	316 Stainless steel, locking
Weight 40g	
HOOKS HOOKS HOOKS HOOKS HOOKS HOOKS HOOKS	
9100/15C	Zinc plated
Weight 10g	
9100/30C	Zinc plated, triangular
9100/30CSS	316 Stainless steel, triangular
Weight 70g	
9100/50C	Zinc plated, 'S' hook
9100/50CSS	316 Stainless steel, 'S' hook
Weight 20g	



702 SERIES OVERCENTRE FASTENERS	
9100/702SC	Zinc plated, non-locking
9100/702SCSS	316 Stainless steel, non-locking
Weight 70g	
9100/702LC	Zinc plated, locking
9100/702LCSS	316 Stainless steel, locking
Weight 80g	
HOOKS HOOKS HOOKS HOOKS HOOKS HOOKS HOOKS	
9100/31C	Zinc plated, triangular
9100/31CSS	316 Stainless steel, triangular
Weight 10g	
9100/10C	Zinc plated, 'S' hook
9100/10CSS	316 Stainless steel, 'S' hook
Weight 30g	



OVERCENTRE FASTENERS

Zinc-plated or stainless steel.



Zinc-plated or stainless steel.

703 FASTENER

T BAR

ALL DIMENSIONS IN MM

RL PLATE

R PLATE

20 HOOK

41 HOOK

16 HOOK

17 HOOK

22 HOOK

MOULDED SLAM LATCHES

The unique design of these latches allows 'fix through' mounting to suit narrow door pillars, sections and channels. Moulded construction provides the benefits of lightweight, self-lubricating action, and total corrosion resistance at an inexpensive price.



Basic Latch (9/01530) is operated by rod or cable as part of a slam system. Single-point models use a large knurled knob for good grip.



Slam bolt retracts fully into case when operated. Slotted bolt-pull provides 'lost-motion' so latches can always be slammed, even when a system is in 'locked' mode.



Fixing by rivets through 6mm holes in case. Use large-headed fasteners to spread load over area.



Latches are self-coloured black with attractive textured finish.



Moulded in acetal copolymer, with stainless steel spring.



Tooling allows special bolt nose shapes to be made, subject to economical minimum batches.



Cycle Testing: The slam latch 9/01530 was tested to over 50,000 cycles of slam and withdrawal with no appreciable wear to bolt-nose or bolt-pull.



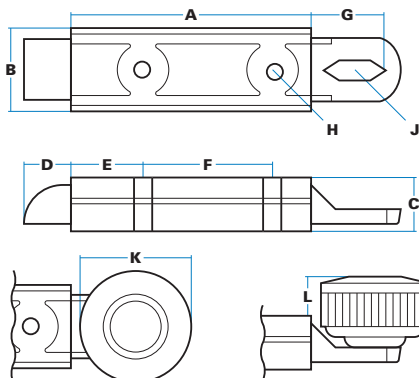
Highly competitive against market alternatives.

Steel
'fix-through'
latch

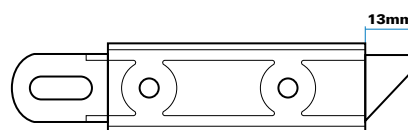


ORDERING CODE

- 9/01528** Moulded slam latch, reversed knob
9/01529 Moulded slam latch, pull-knob fitment
9/01530 Moulded slam latch



Note: Knob & rivet can be supplied loose, for assembly after latch is installed in panel.



Special model with side-action bolt, suitable for roller shutters, etc.

SPECIFICATION

A Body Length	80 mm
B Body Width	29 mm
C Body Height	18 mm
D Bolt Projection	16 mm
E Location	23 mm
F Location	44 mm
G Location	25 mm
H Hole Diameter	Ø 6 mm
J Slot Dimension	7x20 mm
K Knob Diameter	Ø 38 mm
L Knob Height (max)	16 mm

Spring pressure: 6kg to full bolt withdrawal



'FIX-THROUGH' SLAM LATCH IN STEEL

Special design allows 'fix-through' mounting, to suit narrow door pillars, sections and channels. This is interchangeable with our moulded model (9/01530) but may be preferred where there is possibility of impact loads or lateral stress.



Slam bolt retracts fully into case when operated. Slotted bolt-pull provides 'lost-motion' so latches can always be slammed, even when a system is in 'locked' mode.



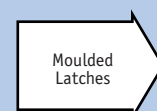
Fixing by rivets through 7mm holes in case. Use large-headed fasteners to spread load over area.



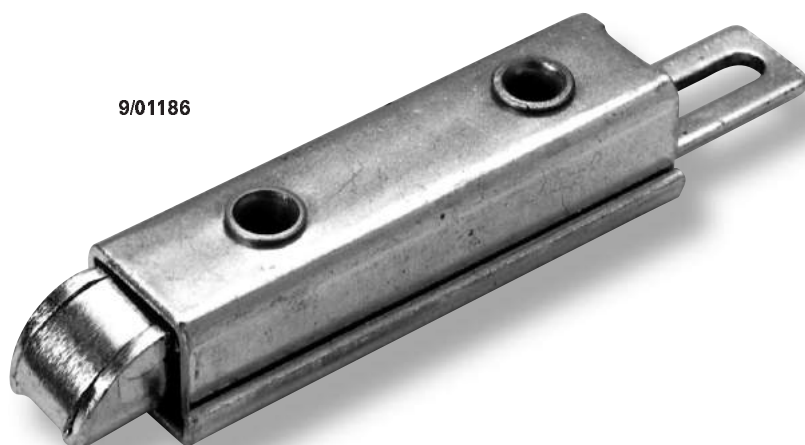
Bright zinc-plated

SINGLE POINT SLAM LATCHES

The basic steel latch can be fitted with a large, knurled moulded knob, riveted in position in either 'nose-up' or 'nose-down' styles.



9/01186

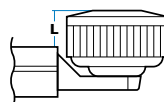
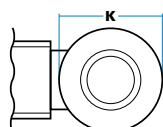
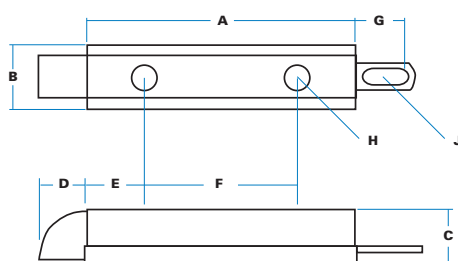


ORDERING CODE

9/01186 'Fix-through' slam latch steel

SPECIFICATION

A Body Length	80 mm
B Max. Width	25 mm
C Max. Height	20 mm
D Projection	13 mm
E Location	20 mm
F Location	43 mm
G Location	23 mm
H Hole diameter	7 mm
J Slot dimensions	6x20 mm
K Knob diameter	Ø38 mm
L Knob height (max)	20 mm
Spring pressure: 5kg to full bolt withdrawal	



9/01728
'nose-up'



9/01729
'nose-down'



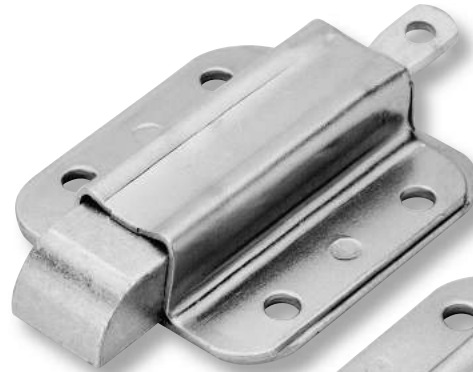
ORDERING CODE

9/01728 Latch & knob, nose-up

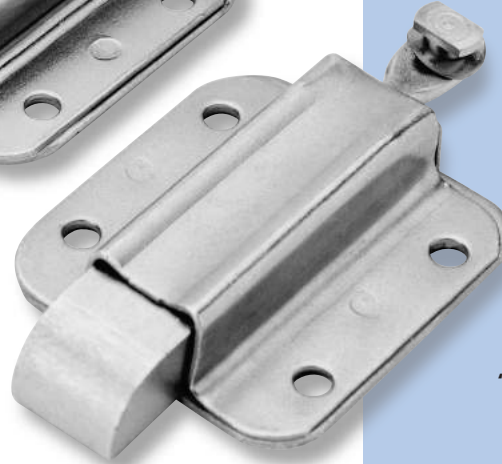
9/01729 Latch & knob, down

END-SLAM LATCHES (END BOLTS)

Precision-made latches which have become motor-industry 'standards', with solid, machine-cut steel bolts and 'quick-fit' attachment point if desired. Adjustable bolt-pull allows bolt projection to be varied, and bolts are reversible to 'nose-up' position. Stainless steel models available.



3/22387 with plain bolt-pull



3/22386 with 'quick-fit' attachment point

3/22388 'Nose-up' bolt allows use on inward-opening doors



ORDERING CODE

3/22386	End latch, nose-down, 'quick-fit' pull
3/22387	End latch, nose-down, plain pull
3/22388	End latch, nose-up, plain pull
3/22389	End latch, nose-up, 'quick-fit' pull
3/22392	End latch, special (non-reversible)
9/01187	Stainless steel latch (as 3/22387)
3/22384	Packing plate

SPECIFICATION

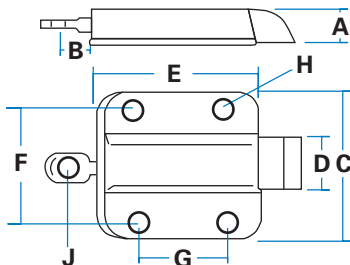
A	Bolt Thickness	13 mm
B	Bolt Pull	13 mm
C	Width	57 mm
D	Bolt Width	19 mm
E	Body Length	62 mm
F	Hole Centres	44.5 mm
G	Hole Centres	33 mm
H	Hole Diameter	Ø 5.5 mm
J	Hole Diameter	Ø 5 mm

Bolt projection variable, 9-16 mm.

Minimum load 5kg for full bolt travel.

Mild steel model made in CR4.

Stainless models in grade 304 with stainless bolt-pull, bolt and spring.



Spring-loaded slam latches, normally used as part of a 2-way or 3-way system.



Bolt retracts fully into case either by slam-action or by withdrawing bolt-pull.



Four holes, 5.5mm dia, through both thicknesses of material. A packing plate is available (3/22384).



Zinc-plated finish on mild steel models. Stainless steel models supplied in mill-finish, can be polished as an option.



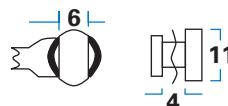
Bolt spring pressure is 6kg (14lbs)



Bolt length can be varied and bolt-nose cut to special profiles. Model 3/22392 has off-centre pull and special non-reversible bolt.

Detail of 'quick-fit' attachment.
The cropped rivet allows fast attachment of link bar as shown. A wave washer prevents rattle and excessive 'play'.

Suggested link bar 3/12497, length 915mm.
Linkage bar is pierced to accept rivet and allow 22mm free movement.



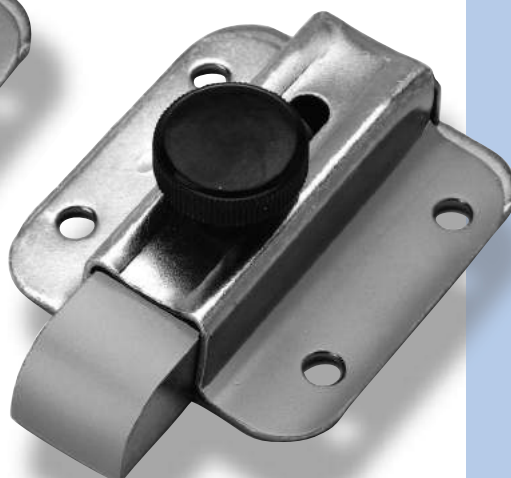
2-way and 3-way slam-systems

Section 3

Striker Plates

4.20

9/00279
'Nose-up'



9/01243
'Nose-down'

9/01059
Bottom knob
latch



Stainless steel models are mill-finished but can be bright polished to special request.

ORDERING CODE

9/00279	Top-knob latch, nose-up mild steel
9/00279SS	Top-knob latch, nose-up stainless steel
9/01059	Bottom-knob latch, mild steel
9/01059SS	Bottom-knob latch, stainless steel
9/01243	Top-knob latch, nose-down mild steel
9/01243SS	Top-knob latch, nose-down stainless steel
9/00028	Pull-handle latch, mild steel

9/00028
Pull-Handle Latch
Fully adjustable
and fully reversible.



Height of loop 33 mm (max) above surface. Also available parallel to latch (height 13mm)

SINGLE POINT SLAM LATCHES

A range of compact slam latches derived from our standard end-bolts, but with direct action by knob or loop handle. These models are useful for seat squabs, gates and passive doors. They are also available in stainless steel.

Dimensions as 3/22386,
Bolt-spring pressure 2.5kg.

TOP-KNOB LATCHES



Surface-mounted design with 20mm diameter knob, at height 10mm above bolt case. Slam bolt projects 17mm and withdraws 15mm (non-adjustable and non-reversible).



Mild steel version is zinc-plated. Stainless steel version is mill finished.

BOTTOM-KNOB LATCHES



Useful for cowl or doors which need to be operated from outside. The knob can be removed, fitted through appropriate slot in the panel, and screwed back. Bolt is non-adjustable and non-reversible.

PULL HANDLE LATCHES



The standard end-latch with a 'loop' handle in 6mm diameter bar, raised at approx. 30° to horizontal.



Slam bolt is adjustable, with projection variable from 9mm - 16mm, withdrawing approx. 9mm. Bolt can be reversed to 'nose-up' position.



Mild steel version is zinc-plated.

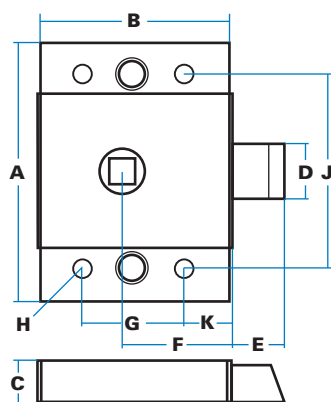


9/02732 with
6.5mm holes &
16mm bolt

ORDERING CODE

9/02730 'Utility' slam latch, 10mm bolt

9/02732 'Utility' slam latch, 16mm bolt



SPECIFICATION

A Case Length	80 mm
B Case width	60 mm
C Case Height	14 mm
D Bolt width	19 mm
E Bolt projection	10/16 mm
F Location (bush)	34 mm
G Hole centres	36 mm
H Hole sizes	dia 6.5 mm
J Hole centres	62 mm
K Location	14 mm
Bolt withdraws (maximum)	10mm
Bolt-spring pressure for full travel	5Kg

'Original' Models

Models below are identical but with mounting holes at 8mm diameter, countersunk to 10mm dia. (centre hole is an assembly feature only).

ORDERING CODE

3/17330 'Utility' slam latch, 10mm bolt

3/17332 'Utility' slam latch, 16mm bolt

3/12330/01 As 3/17330, bolt 'nose-up'








3/17332 with
8mm holes &
16mm bolt

'UTILITY' SLAM LATCHES

These well-proven latches have recently been re-designed to reduce size of mounting holes. The 'original' versions are still available when required.

Plant-on latches with central follow-bush which rotates 45° in either direction to withdraw bolt. Can be slammed even when handle is in 'locked' mode. Two lengths of bolt, zinc-plated finish.

-  Latch slams against striker plate; bolt is released by action of follow-bush.
-  Latches are non-'handed'. Rotate follow-bush in either direction to withdraw slam-bolt.
-  Fully plant-on fixings by bolts or rivets through three holes as shown.
-  Zinc-plated.
- 
 - Bolt fitted 'nose-up'
 - Permanently retained inside spindle/handle
 - Alternative fixing holes



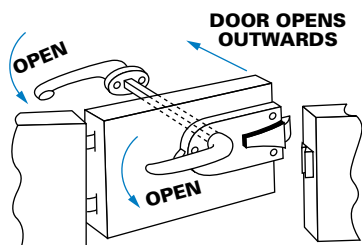
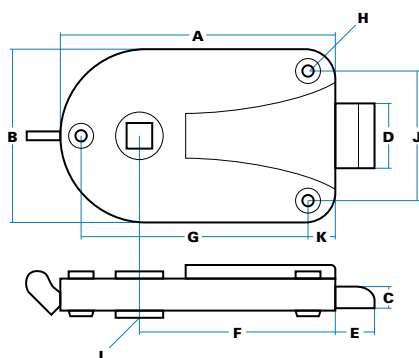


'MINI' SLAM LATCHES

Originally developed for the 1961 'Mini' car, these latches are still the neatest and most compact models available. Normally used with our exterior locking handles, the latches can be slammed shut without damage, even when the handle (or safety catch) is in 'locked' position. Suitable for auxiliary compartment doors and off-road vehicles.

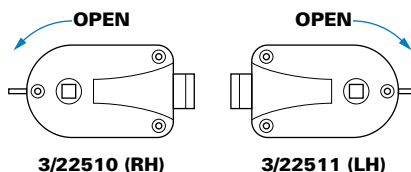
ORDERING CODE

3/22510	Latch, (RH), with safety catch
3/22511	Latch, (LH), with safety catch
3/22512	Latch, (RH), without safety catch
3/22513	Latch, (LH), without safety catch
1/27106	Striker plate

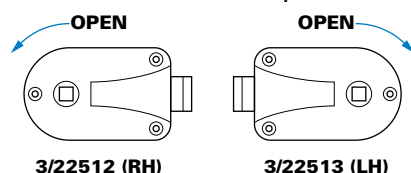


TYPICAL INSTALLATION - RIGHT-SIDE DOOR

Models with safety catch



Models without safety catch



SPECIFICATION

A	Case Length	95 mm
B	Case Width	60 mm
C	Case Height	16 mm
D	Bolt Width	22 mm
E	Bolt Projection	18 mm
F	Location	66 mm
G	Hole Centres	77 mm
H	Hole Sizes	5 mm c/s 9 mm
J	Holes Centres	43 mm
K	Location	10 mm
L	Projection	4 mm
	Total bush movement	45°
	Total bolt withdrawal	15 mm
	Minimum load for full bolt retraction	6kg



Latch slams against striker plate; bolt is released by action of follow-bush.



Latches are 'handed' LH/RH by direction of rotation of bush, as shown. The safety catch (when fitted) prevents operation from outside, but allows latch to slam as normal.



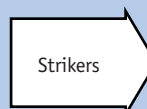
Fully plant-on fixings by bolts or rivets through three 5 mm holes as shown.



Bright zinc-plated, with brass bolt and chromium plated safety catch.



Use with any of our outside handles, with 8 mm square shaft. Inside handle mounts directly onto through-shaft. Suggested striker plate is 1/27106



Strikers

4.20

9/00724 Striker,
normally used with
this latch

9/01283, RH latch,
shown in 'open'
position

LH 9/01583

Latches shown
with claw in
'engaged' position

RH 9/01283

ORDERING CODE

9/01283 Claw latch RH, side-mount

9/01583 Claw latch LH, side-mount

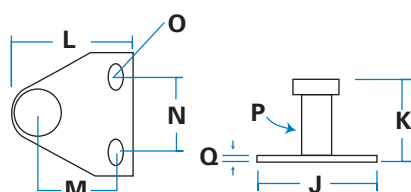
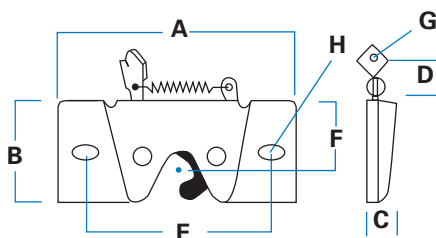
9/00724 Pin-striker, 52 mm

SPECIFICATION

A Length	100 mm
B Height	50 mm
C Width	19 mm
D Location	21 mm
E Hole Centres	76 mm
F Location	30 mm
G Hole Size (diameter)	3 mm
H Hole Sizes	6.5 x 12 mm
Maximum force on trigger to release: 2.5kg	

J Width	51 mm
K Height	35 mm
L Length	51 mm
M Location	32 mm
N Hole Centres	32 mm
O Hole Sizes	5.5 x 9 mm
P Pin diameter	12.5 mm
Q Thickness	3 mm

An alternative striker, 9/01246, has K=23mm.
Striker pins are staked and brazed, hardened and plated.



'CLAW' LATCHES SIDE-MOUNT

Extremely versatile units which sit within a compartment and slam against a striker peg to provide a very positive engagement. They release by pressure against top trigger or by remote cable. Used for top-opening hatches and covers where latch is concealed below edge of door or base unit.



Slam-action against pin or loop striker plate. Both 'hands' available as illustrated.



Claw engages with striker and is released by pressure on top trigger or can be operated remotely via cable to hole in trigger plate.



Plant-on fixing through elongated holes in side flanges.



Zinc-plated latch and strikers.

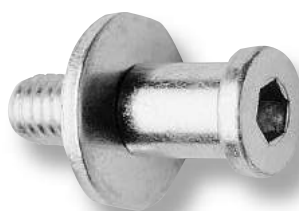


Use with camlocks or handle with appropriate latch bar.



Anti-burst properties
When rig-tested these latches can achieve values in excess of 6.0KN transverse load (direct pull). However they must not be used for passenger restraint doors.

Right-hand
(9/00424) in
unlatched position



9/00425 Striker

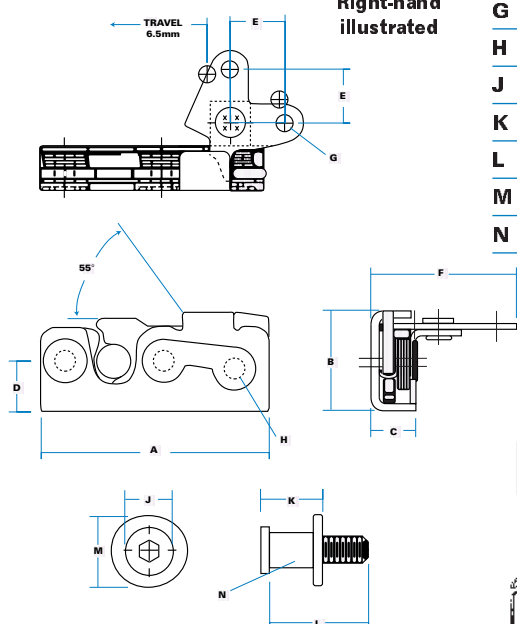


ORDERING CODE

9/00423	Rotary latch, LH
9/00424	Rotary latch, RH
9/00425	Striker pin, (not handed)

SAFETY CRITICAL

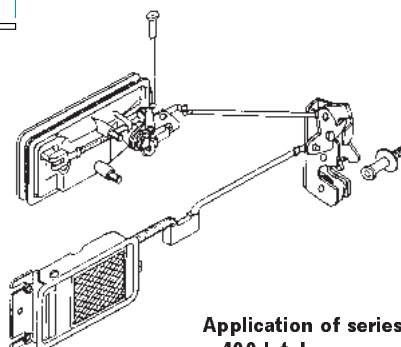
Right-hand
illustrated



Striker pin head 8mm hex x 4mm deep
Thread form 14 UNC Class 2A

SPECIFICATION

A Case length	92 mm
B Case width	40 mm
C Case depth	20 mm
D Location	21 mm
E Pivot to hole	21 mm
F Location	59 mm
G Actuator hole (dia)	6.5 mm
H Mounting hole (dia)	8.0 mm
J Pin head diameter	19 mm
K Surface projection	26 mm
L Total pin length	44 mm
M Washer diameter	30 mm
N Striker pin diameter	14 mm



Application of series
400 latches - see
'Flap Handles'

'SERIES 400' ANTI-BURST LATCHES

The exceptionally neat and compact design of the 'Series 400' makes it suitable for confined spaces and thin doors. It provides 2-stage anti-burst latching, with mounting through the pivot points for great strength.



Slam-action against striker pin. Both 'hands' available as illustrated.



Claw engages pin with 2-stage action, and is released by pull as shown on 2-lobe actuator arm.



Plant-on to edge of door, fixing through body of latch with cut-out for actuator arm.



Clear zinc-plated throughout.



Alternative actuator arms to special order.



Use with 'remote action' handles, turnbuttons, wire and rod linkages, etc.



Anti-burst properties
When rig-tested these latches can achieve values in excess of 8.9 KN* transverse load in fully-latched condition. However vehicle builders are responsible for evaluating performance in their own particular application and for ensuring that appropriate legislation is satisfied.

* SAE & ECE11 Specification



9/01830
Right-hand latch with
fitted cover and
integral inside handle

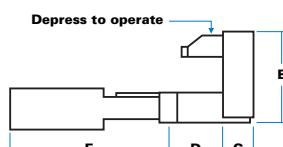
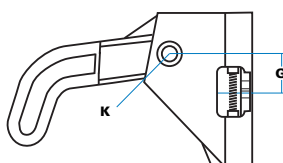
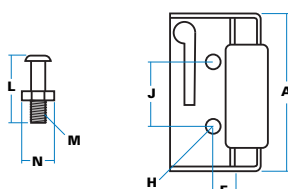
ORDERING CODE

9/01830	Latch assembly, RH
9/01831	Latch assembly, LH
9/01832	Striker pin

Note: Above assemblies include steel cover plate, moulded trim cover and inside release handle.

SPECIFICATION

A Height	80 mm
B Width	47 mm
C Depth	17 mm
D Location to hole	26 mm
E Length, handle	80 mm
F Location to face	9 mm
G Location to latch centre	19 mm
H Hole sizes	6 mm
J Hole centres	31.5 mm
K Hole size (Threaded)	M6
L Pin total length	41 mm
M Threaded	12 mm x 1 mm fine pitch
N Hexagon across flats	16 mm



Above drawings include cover plate

View of left-hand latch from exterior, showing 'trigger' for outside release, steel cover plate and moulded trim cover.

ANTI-BURST LATCHES FOR OFF- ROAD VEHICLES

Specially developed for agricultural tractors, construction plant and similar off-road vehicles, these latches are easily fitted to single-skin doors, with a neat, moulded trim cover for good appearance.

Latches operate from a push-button handle mounted on the outside panel, so that plunger engages with 'trigger'.

! Two-stage rotary action, integral inside release, with fixing holes concealed by trim cover. Steel cover plate reinforces latch to increase strength rating.

W 'Handing' shown for front-hinged doors. Reverse handing for front-opening.

U Latch slams against pin-striker, is released by exterior 'trigger' or by lifting inside handle. There is no inside locking function.

I Attach to door edge by 2 x M6 high-tensile bolts through steel cover plate (which must be used). Trim cover is retained by M6 screw into threaded hole on side-face.

H Black zinc-plated with moulded trim cover and inside release, bright zinc plated striker.

T When rig-tested these latches can achieve values in excess of 8.9KN (2000lb) Transverse load in fully-latched condition. The design is intended for off-road vehicles, and constructors are responsible for evaluating performance in their own particular application and for ensuring that appropriate legislation is satisfied.



9/01383 Catch in
'open' position



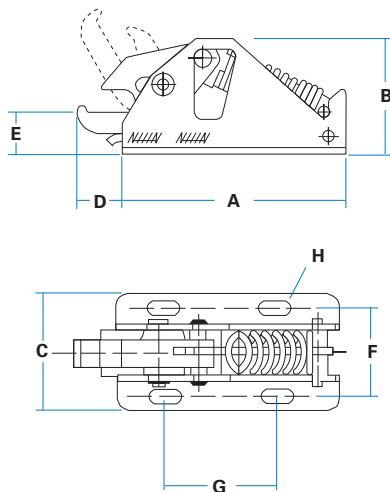
9/01384 Double
loop striker

Catch in
'closed' position

ORDERING CODE

9/01383 Hold-down catch

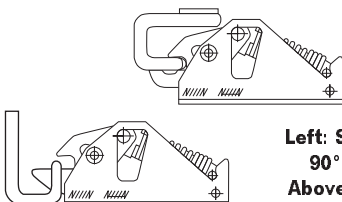
9/01384 Double loop striker



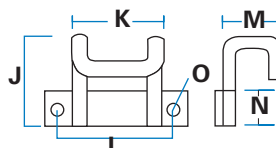
SPECIFICATION

A Case Length	110 mm
B Case Height	56 mm
C Case Width	58 mm
D Projection	21 mm
E 'Claw' Height	21 mm
F Hole Centres	44 mm
G Hole Centres	55 mm
H Hole Sizes	16.5 x 6 mm
J Height Of Loop	60 mm
K Width Of Loop	50 mm
L Hole Centres	70 mm
M Projection	45 mm
N Plate Width	30 mm
O Hole Size	8 mm

The 'Double-loop' striker provides great freedom in the mounting positions of catch and striker.



Left: Striker is at
90° to catch
Above: Striker is
parallel with catch



INSIDE HOLD-DOWN CATCH

over-centre action

A robust and simple plant-on unit which uses over-centre action to trap and hold down the striker-loop.

Widely used for engine covers, grills, luggage compartments and for machine covers and canopies.



The catch is mounted on cover or base, and simply slams against a striker. Release is by direct pull away from striker, usually using a grab handle. Pull -out force is 20kg (55lbs)



Slam-action causes moulded 'claw' to rotate through 60°, bringing the powerful spring over-centre to trap and hold down the striker loop.



Fixing through four elongated holes in base-plate.



Steel parts are zinc-plated. 'Claw' is glass-filled nylon in black.

DOOR BUFFER ASSEMBLY

Moulded buffer with steel insert threaded M8, together with two steel spacing washers. Cushions door closure, prevents rattle.



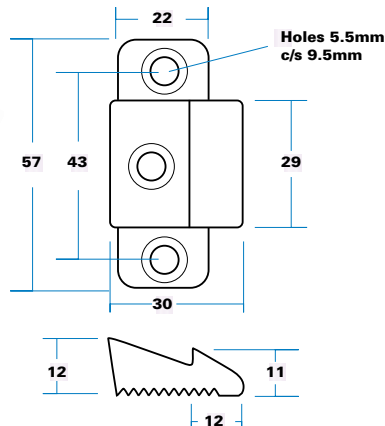
9/01968

Buffer height 10mm x 30mm diameter. Black, with plated insert.

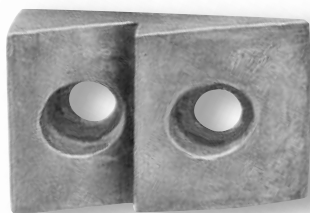
1/27106
(Serrated base)



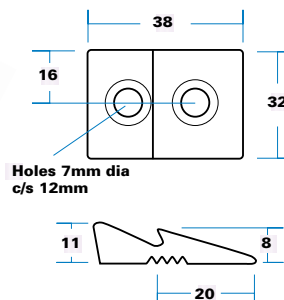
Versatile 2-step design, used with "Mini" slam latches and similar models.



1/27107
(Serrated base)



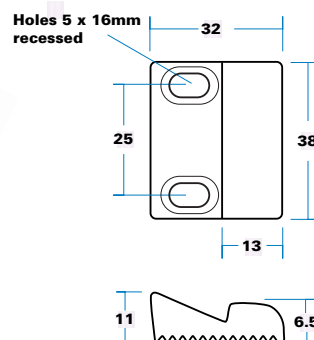
2-step striker for thicker doors/frames with longer depth of travel for full closure. Suits 'Mark 50' heavy-duty slam latches, etc.



1/27113
(Serrated base)



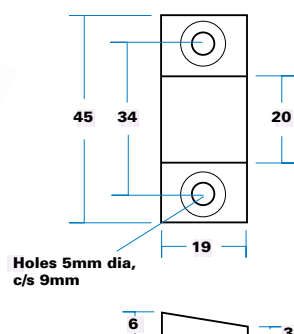
Useful 2-step striker with adjustable mounting holes. Use with most slam latches, 'paddle' latches, etc.



3/12341
(Plain base)



Standard with 2 & 3-way slam systems. Use with end-bolts, moulded slam latch 9/01530, etc.



DIECAST STRIKER PLATES

These strikers should be used with our various slam latches to protect door edges and ensure full engagement. Choice of striker will be determined by depth of door/pillar and clearance when closed. All units are zinc diecast and clear zinc-plated.

3/13521 Pin



3/13520 Plate



ALIGNMENT PLATE & PIN

The steel pin is usually fitted to the door frame and plate to the door edge. As door closes, the 'shoulder' on the pin is drawn into the shaped slot and provides firm and positive support. Zinc-plated. Request dimensions from sales office

ORDERING CODE

Standard Models

9/02058	2-way system complete, RH
9/02059	2-way system complete, LH
9/02060	2-way mechanism only, RH
9/02061	2-way mechanism only, LH

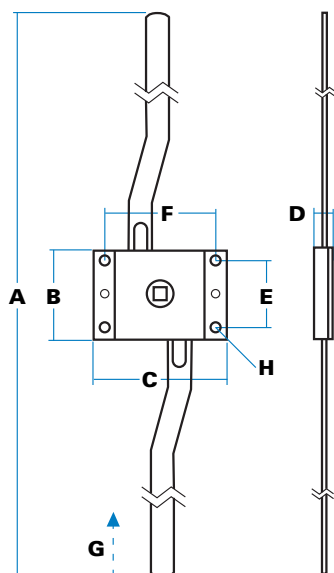
Special ('historic') models

3/02858	2-way system complete, RH
3/11048	2-way mechanism only, RH
3/18617	Guiding rod

Note

'Historic' models have mechanism length at 1320 mm and 'F' dimension 57 mm, and must use end-latches 3/22386.

Right-hand illustrated



SPECIFICATION

A. Length of system (extended)	2000 mm
(retracted)	1950 mm
B. Case length	50 mm
C. Case width	75 mm
D. Case height	14 mm
E. Hole centres (vertical)	38 mm
F. Hole centres (horizontal)	62 mm
G. Withdrawal (each end)	25 mm
H. Hole sizes (diameter)	4 mm

With end latches attached, maximum system length is 2120 mm.

Dimensions of end latches (3/22387) shown separately.

Full system includes end-latches (3/22387) Striker plates (3/12341), rivets (19-7), and wave washer (58-21).



Complete right-hand slam system 9/02058 (includes all items shown) shown fully extended from inside.

2-WAY SLAM SYSTEMS

The standard model illustrated is representative of a family of 2-way centre mechanisms, used with our end latches to provide slam action on two sides of a door or panel. Right-hand and left-hand systems are available, with many options to suit (volume) applications.



System slams shut, is opened by inside/outside handle or 'T'-key. It can be slammed even when handle is locked, due to 'free movement' allowed by link bars.



Rotation of centre follow-bush (8 mm) withdraws link bars and slam bolts. System is handed by direction of rotation of follow bush and position of bars.



System is fully plant-on. Plain end of bars should be cut and drilled as required : rivets and washers are supplied with kit. Bolt pull length adjustable.



Zinc-plated throughout.



- Special link bars to order
- Permanently-attached inside handle
- 'Male drive' (8 mm square) spindle on inside/outside of latch.
- Alternative end latches
- Case hole dimensions (F = 57 mm)

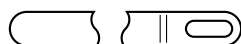
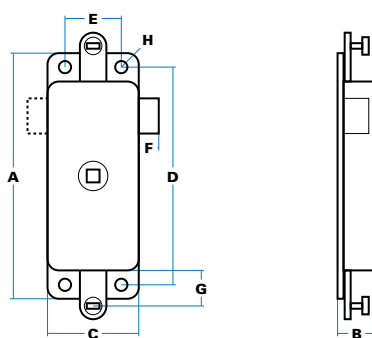
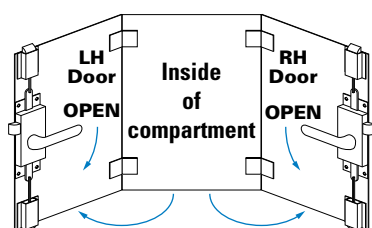
End Latches

4.10



Right hand centre (3/12507), shown with attachment points fully extended.

2-way centre (3/12508) is identical, but without centre bolt.



Standard linkage bar 3/12497, used on 3-way slam system

ORDERING CODE

3/12506	3-way slam centre, LH
3/12507	3-way slam centre, RH
3/12508	2-way slam centre, RH
3/12509	2-way slam centre, LH
3/12497	Linkage bar (915mm)

SPECIFICATION

A Length	127 mm
B Height	19 mm
C Width	45 mm
D Hole Centres	114 mm
E Hole Centres	28 mm
F Bolt projection	11 mm
G Length Extended	21 mm
Withdrawn	14 mm
H Hole Sizes (diameter) c/s 8 mm	Ø 5.5 mm

Follow bush accepts 8 mm square shaft from both sides.

Rotation 40° to fully withdraw centre bolt and links, direction of rotation as shown in diagrams.

Materials: Case and follow bush, zinc diecastings. All other components are mild steel.

2/3-WAY SLAM CENTRES

An exceptionally neat and compact unit which is used to make up 2-way or 3-way slam systems. 'Quick-fit' attachment points on case allow link bars to be quickly and easily attached, (generally with slam latches 3/22387). The integral slam-bolt provides centre-latching when fitted.

LEFT AND RIGHT 'HANDS'

A new, left-hand version has recently been developed to suit European and U.S. requirements where fittings are normally on the left-side rear doors.



System can be slammed-shut even when an exterior handle is in 'locked' position. Attached slam bolts (adjustable) will return links to extended position.



Rotation of follow-bush (as shown) withdraws slam bolt fully into case, also withdraws links by 7mm at each end, which operate (attached) slam latches. Unit is 'handed' by position of centre bolt and by direction of rotation of follow-bush (and operating handle).



Zinc-plated as standard. Optionally, case can be polished and chromium plated.



Centre-bolt omitted for 3/12508/9. Bolt can be reversed or extended to special request but bolt will withdraw to 11mm only.

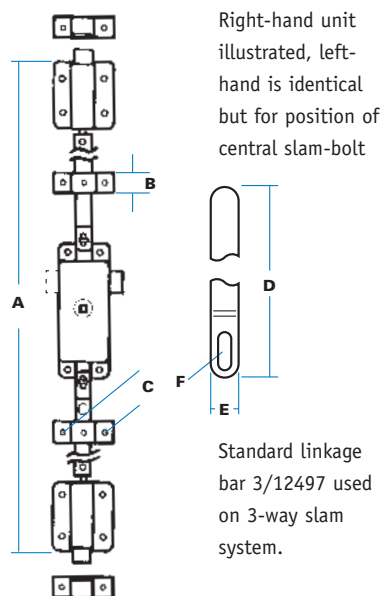
A new left-handed version has recently been developed to suit European and U.S. requirements where fittings are normally on the left-side rear doors.

ORDERING CODE

3/18341	3-way slam system, left-hand
3/18342	3-way slam system, right-hand
3/18343	2-way slam system, right-hand
3/18344	2-way slam system, left-hand

Normally supplied in boxed sets of 10 units. All components are provided, including guides (3/18617), strikers (3/12341), rivets (19-7) and wave washers (58-21).

SPECIFICATION



A. Max. Length of system	2057 mm
B. Guide plate width	25 mm
C. Guide hole centres	40 mm
D. Length of linkage bar	915 mm
E. Linkage bar section	12 x 3 mm Cranked 5 mm (rolled edges)
F. 'Free movement' slot	22 mm

All other dimensions shown on individual component pages.
Centre bolt withdraws by 11 mm maximum.



Complete right-hand assembly 3/18342 (includes all items shown)

Latch is shown as mounted on inside of panel.

2/3-WAY SLAM SYSTEMS

These versatile systems are assembled on site from standard end-latches, together with centre case (opposite) and connecting bars. The three slam bolts act together and are withdrawn simultaneously.

Left and right-hand versions are identical apart from position of centre bolt and direction of rotation of centre follow-bush. 2-way versions do not have centre slam-bolt.

! System slams shut, is opened by inside/outside handle or T-key. It can be slammed even when handle is locked, due to 'free movement' allowed by link bars.

↕ Rotation of centre follow-bush withdraws slam bolt fully into case, also withdraws links at each end, which operates slam latches. System is handed by position of centre-bolt and direction of operation of follow-bush.

⚙ Components are fully plant-on, with 'quick fit' attachment of link bars to centre case. Plain end should be cut and drilled as required: rivets and washers are supplied with kit.

🔧 Zinc-plated throughout.

?

- Centre bolt omitted for 3/18343
- Bolt can be reversed or extended to special request.
- Alternative end latches
- Special link bars to order



ORDERING CODE

3/18794 2-way rod latch, RH, (set)

3/18795 2-way rod latch, LH (set)

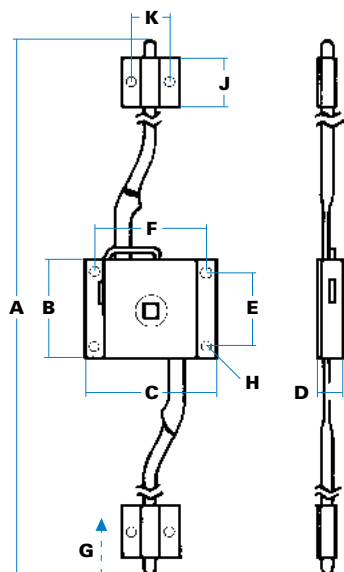
3/18794 MO 2-way latch, RH, no guides

3/18795 MO 2-way latch, LH, no guides

3/18899 Guide, 2-way latches

3/18898 Packing-plate for guides

Right-hand illustrated

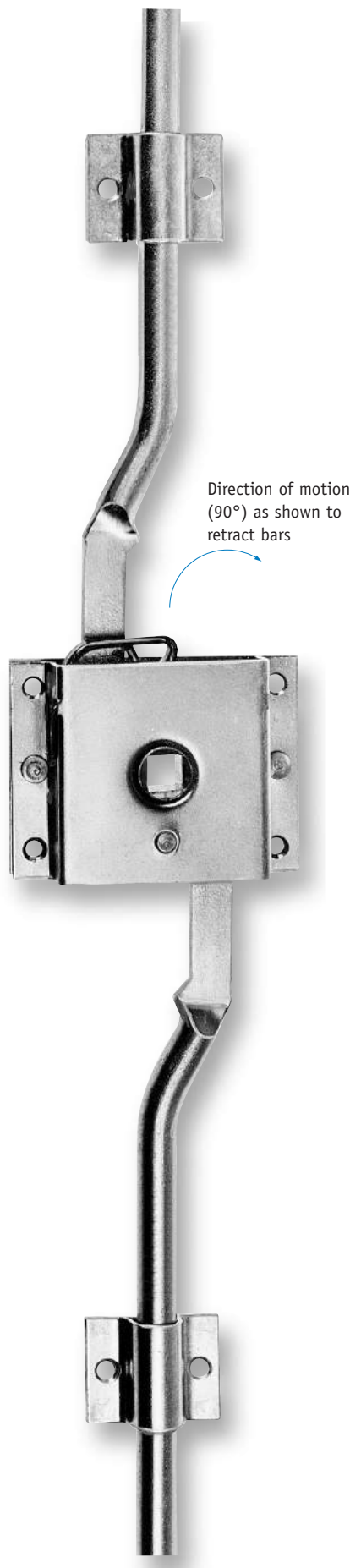
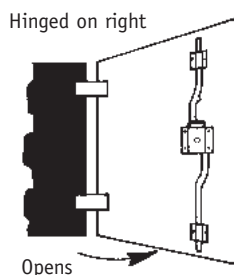


SPECIFICATION

A. Length of system (extended)	2210 mm
(retracted)	2160 mm
B. Case length	50 mm
C. Case width	67 mm
D. Case height	14 mm
E. Hole centres (vertical)	38 mm
F. Hole centres (horizontal)	57 mm
G. Withdrawal (each end)	24 mm
H. Hole sizes (diameter)	4 mm
J. Guide length	25 mm
K. Hole centres	22 mm

Rod diameter 10 mm. Follow bush mounted centrally to accept 8 mm square shaft.

Note on 'handing'
Sketch shows right side latch in position on interior of door which is hinged on its right-hand edge (when viewed from outside).



Right-hand rod latch 3/18794 (includes guides) shown fully extended, from inside.

2-WAY ROD LATCHES

Again, a design which is an industry-standard for securing large doors requiring latching on two edges. This is a 'deadbolt' system with 10 mm diameter rods driven by centre bush, and held extended by action of a strong spring. Right-hand and left-hand models are available, with many special options.



Close door, turn inside/outside handle (or T-key) to 'throw' rods past door edge. System cannot be slammed.



Centre bush rotates through 90° as shown to withdraw rods by 24 mm (each end). System is 'handed' by direction of rotation.



Latches are fully plant-on. Rod ends should be cut as required: guides are supplied with full system.



Zinc-plated throughout.



- Special rod lengths to order
- Permanently-attached inside handle
- 'Male drive' (8 mm square) spindle on inside/outside of latch.
- Case hole dimensions (F = 62 mm)

ORDERING CODE

3/18238 3-way rod latch, RH, (set)

3/18254 3-way rod latch, LH, (set)

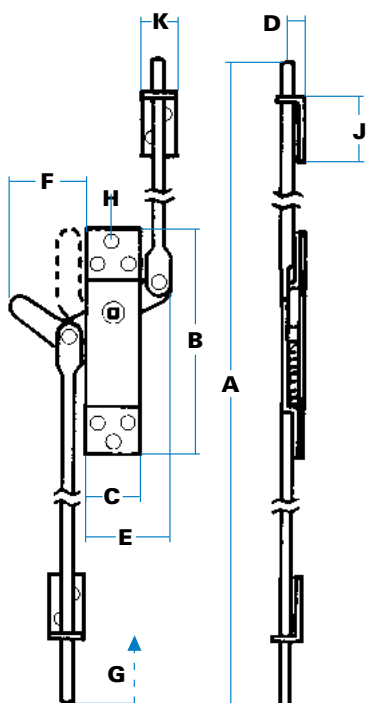
3/18238 MO 3-way latch RH,
no guides/keepers

3/18254 MO 3-way latch LH,
no guides/keepers

3/18702 Rod only, 1145 mm length

3/18716 Guide, 3-way latches

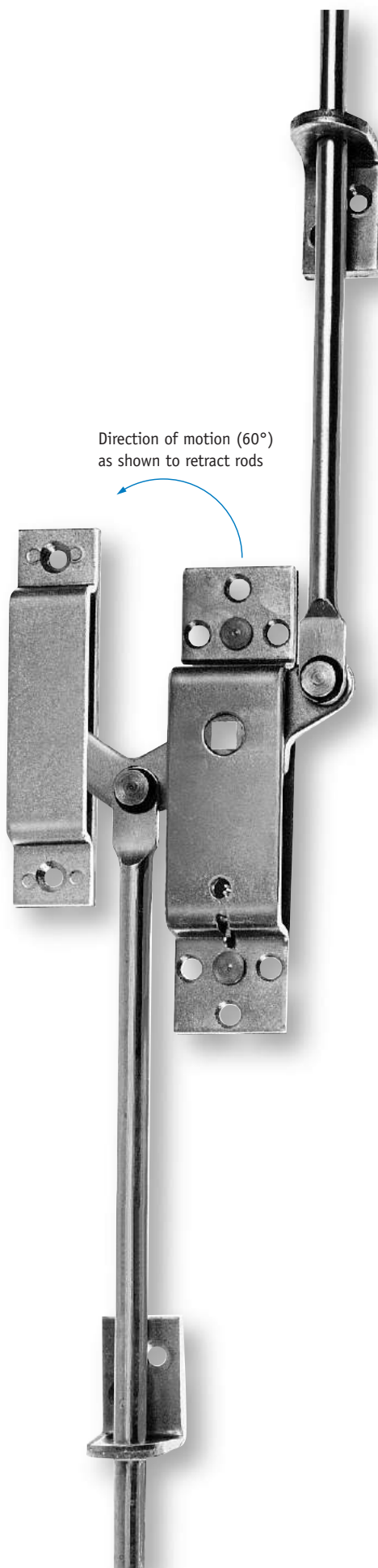
3/18722 'Keeper', 3-way latches



SPECIFICATION

A. Length of system (extended)	2264 mm
(retracted)	2230 mm
B. Case length	145 mm
C. Case width	36 mm
D. Height to rod centre	15 mm
E. Rear projection	57 mm
F. Front projection (extended)	54 mm
(retracted)	21 mm
G. Withdrawal (each end)	33 mm
H. Hole sizes (diameter) 6 mm, c/s 9 mm	
J. Guide plate length	40 mm
K. Guide width	25 mm

'Keeper' dimensions 120 x 25 mm, maximum height 12 mm, hole centres 101 mm
Centre 'tongue' & guide thickness, 4 mm
Rod dimensions : 10 mm dia. x 1145 mm length.



Left-hand rod latch 3/18254 (includes guides & keeper plate) shown fully extended, from inside.

3-WAY ROD LATCHES

A heavy-duty design which provides 3-point latching with an exceptional amount of 'throw'. This is a 'deadbolt' system with 10 mm diameter rods driven by centre bush, and held extended by action of a strong spring. Right-hand and left-hand models are available, with many options.



Close door, turn inside/outside handle (or T-key) to 'throw' rods and extend centre tongue. System cannot be slammed.



Centre bush rotates through 60° as shown to withdraw rods by 33mm (each end) and to pivot centre tongue to vertical. System is 'handed' by direction of rotation and position of tongue and rods.



Latches are fully plant-on. Rod ends should be cut as required : guides and keeper are supplied with full system.



Zinc-plated throughout.



- Special rod lengths to order
- Permanently-attached inside handle
- 'Male drive' (8 mm square) spindle on inside/outside of latch.

T' Keys

4.2

SIMPLIFIED ROD LATCHES

These models do not have mounting case or spring, and fit directly on to a fixed, 8 mm shaft. They represent a very simple, economical way of securing large compartments. Additional support can be gained by use of standard rod guide-plates.



Rods are completely free to move on handle shaft, to a maximum of 160° travel.



Centre bar must be secured to handle, often using locknuts on M10 threaded shaft. Rod guides at each end will provide additional support.



Zinc-plated throughout.



Centre bars in 3 mm-thick mild steel, riveted to 10 mm-diameter rods normally at 1090 mm length.



- Special rod lengths
- Rods can be 'opposed' (opposite to illustrations)
- Tapered ends.



**Guide plate
3/18716**

Made in 4 mm material, base size 25x40 mm, with height to hole centre line of 14 mm

9/01177 (shown)

Centre bar (5/00508) has 32 mm centres and 8 mm 'diamond' piercing. Rotation through 90° will withdraw rods by 15 mm, approx. Rod lengths 1090 mm. (Also available with 'square-on' piercing as 9/01178).

9/01078 (shown)

Centre bar (5/00789) has 46 mm centres and 8 mm 'square-on' piercing. Rotation through 90° will withdraw rods by 23 mm, approx. Rod lengths 1090 mm. (Also available with 'diamond' piercing as 9/01077).

ORDERING CODE

2-way latch at 32 mm centres

9/01177 'diamond' piercing

9/01178 'square-on' piercing

2-way latch at 46 mm centres

9/01077 'diamond' piercing

9/01078 'square-on' piercing

3/18716 Guide plate

Poseidonweg 39
8239 DK Lelystad

T 0320 - 28 61 71
E lelystad@auerhaan.nl
W auerhaan-lelystad.nl

Reken op ons.

